

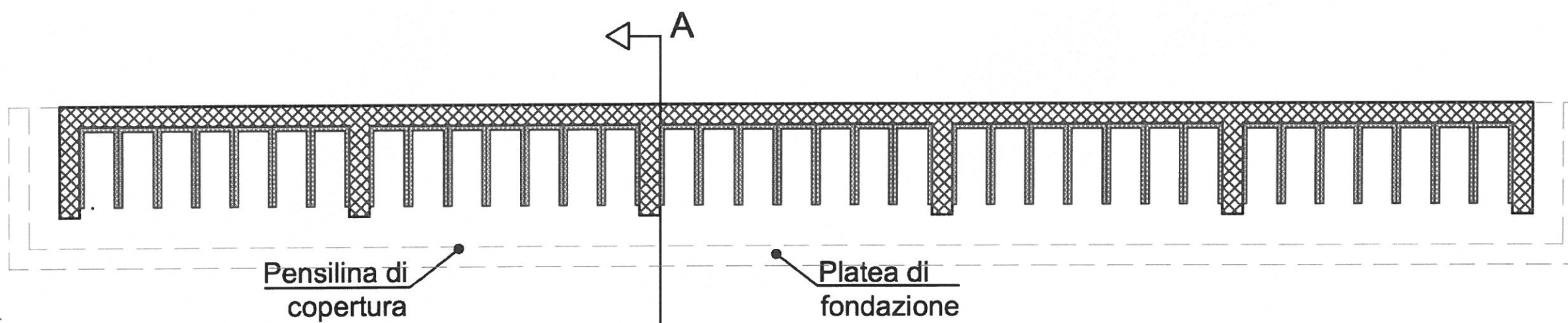
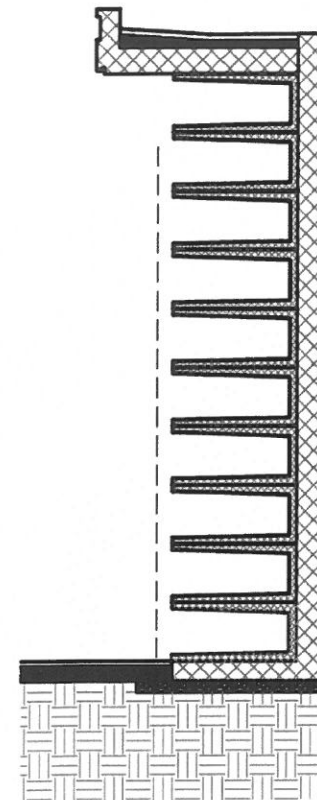
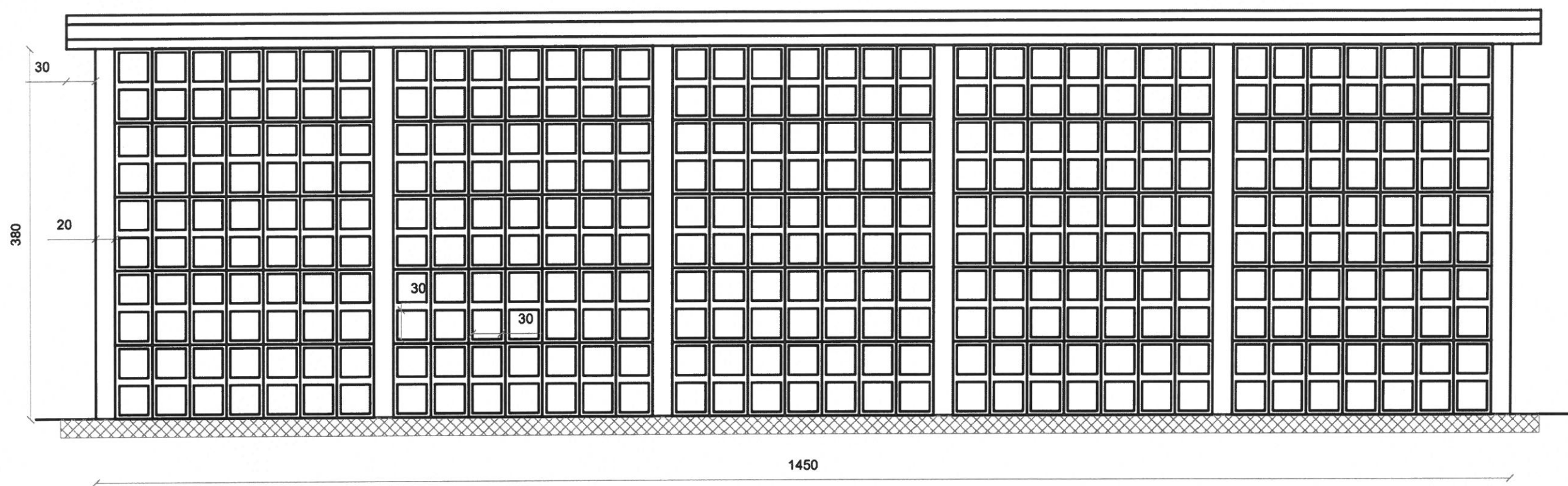


COMUNE DI PORTO CESAREO
PROVINCIA DI LECCE

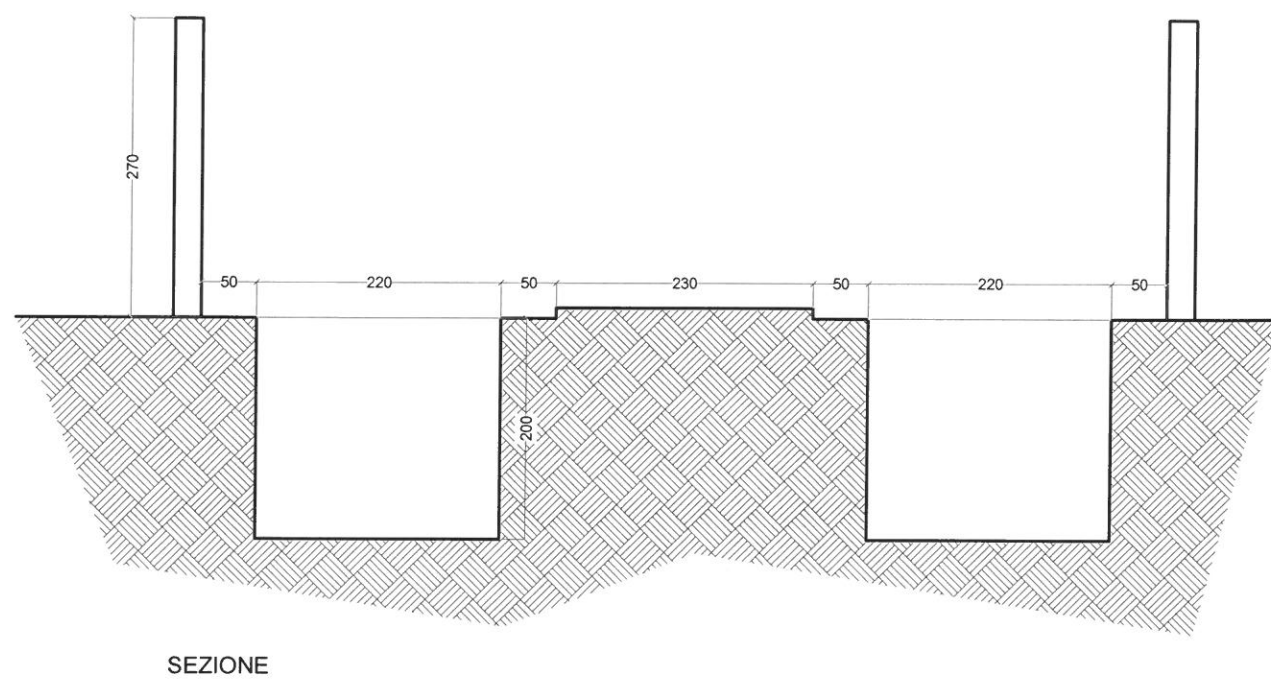
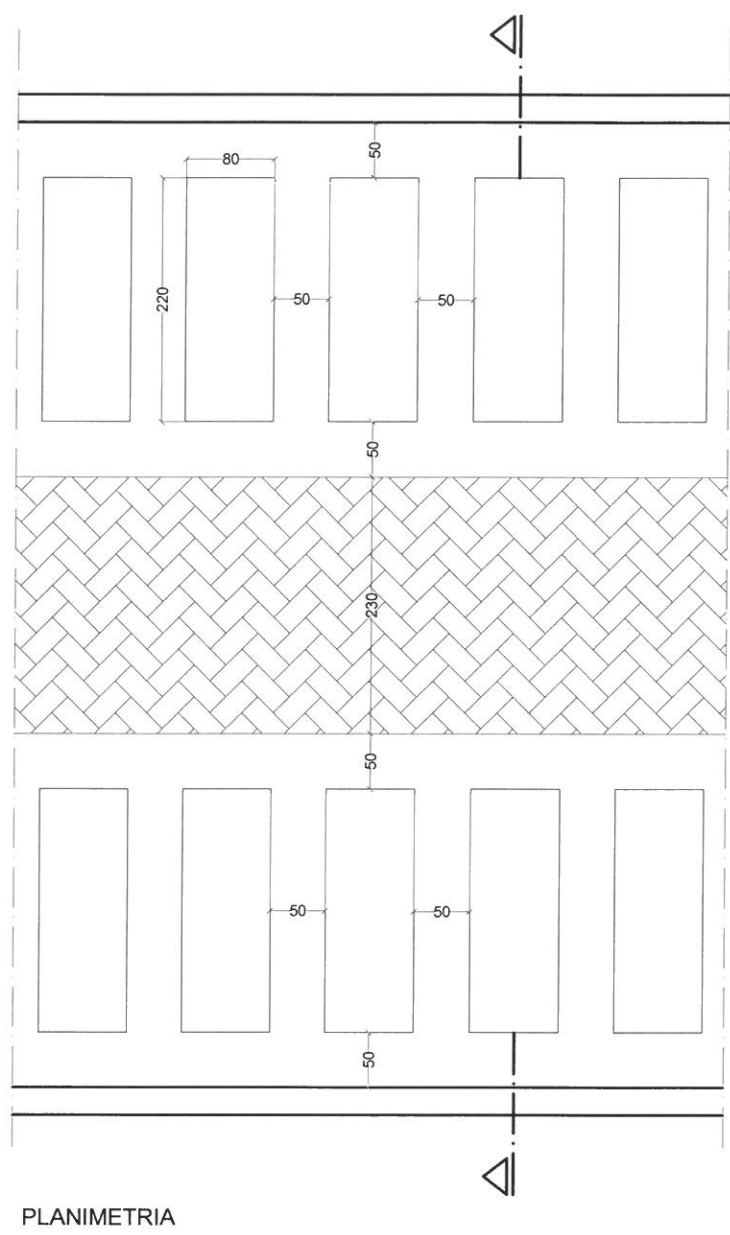


PIANO REGOLATORE CIMITERIALE

PARTICOLARI COSTRUTTIVI		Elaborato T3
Data dicembre 2024		Scala varie
PROGETTO Settore V - Lavori Pubblici	IL RESPONSABILE DEL SETTORE V ing. Antonio Luciano Pezzuto	



T3.1: PARTICOLARE OSSARI



T3.3: PARTICOLARE FOSSE D'INUMAZIONE